

KEY WEST HARBOR MONROE COUNTY, FLORIDA POST-HURRICANE IAN HYDROGRAPHIC EXAM SURVEY FY23 26, 30 AND 34-FOOT PROJECT

SURVEY NOTES

- REFER TO SURVEY NO. 23-008.
- ELEVATIONS ARE IN FEET AND TENTHS AND REFER TO MEAN LOWER LOW WATER (MLLW) TIDAL DATUM.
- TIDAL REDUCTIONS WERE OBTAINED UTILIZING REAL-TIME KINEMATIC (RTK) GPS AND REFERENCED TO MLLW UTILIZING A HYPACK KINEMATIC TIDE DATUM (KTD) MODEL. KTD FILE NAME IS: "BROWARD-MIAMIDADE-MONROE-COLLIER_2018 05 02.KTD".
- ALL ELEVATIONS ARE BELOW THE CHART DATUM UNLESS PRECEDED BY A (+) SIGN.
- PLANE COORDINATES ARE BASED ON THE TRANSVERSE MERCATOR PROJECTION FOR THE EAST ZONE OF FLORIDA AND REFERENCED TO THE CURRENT REALIZATION OF THE NORTH AMERICAN DATUM OF 1983 (NAD83), BASED ON THE NOAA NATIONAL SPATIAL REFERENCE SYSTEM (NSRS).
- ALL STATIONING REFERS TO THE CENTERLINE OF THE CHANNEL.
- DEPTHS DEPICTED BY THIS SURVEY ARE REFERENCED TO MLLW, TIDAL EPOCH 1983-2001, AS REPORTED BY THE NATIONAL OCEANIC AND ATMOSPHERIC ADMINISTRATION (NOAA). A MODIFIED VERSION OF NOAA'S VDATUM MODEL WAS USED TO CALIBRATE TO THE PUBLISHED MLLW HEIGHTS OF THE BENCHMARKS BELOW:
NOAA TIDAL STATION 872-4580, KEY WEST, FLORIDA (PID: AA1753)
- THIS SURVEY WAS PERFORMED USING REAL-TIME KINEMATIC (RTK) GPS POSITIONING WITH THE FOLLOWING REFERENCE BASE LOCATION:
REFERENCE BASE LOCATED AT "KH-04" (PID: BBCE03)
- VERTICAL MEASUREMENTS WERE MADE USING A R2SONIC 2026 MULTI-BEAM SYSTEM OPERATING AT 240 KHZ AND A ROSS SMART SOUNDER 835C DUAL-FREQUENCY SOUNDER WITH A 28/200 KHZ SINGLE-BEAM TRANSDUCER. ALL SOUNDINGS SHOWN ARE IN HIGH FREQUENCY.

VESSEL	DATE OF SURVEY	CUT
SV FLORIDA II	07 OCT 2022	MAIN SHIP CHANNEL
SV FLORIDA II	08 OCT 2022	CUTS A & B
SV FLORIDA II	09 OCT 2022	TRUMAN HARBOR & CUT-C
SV FLORIDA II	10 OCT 2022	TURNING BASIN, USCG, KW BIGHT CUTS
SV FLORIDA II	11 OCT 2022	MAN-OF-WAR CUT-1, AMMO WHARF
- AIDS TO NAVIGATION WERE LOCATED DURING THIS SURVEY.
- THE INFORMATION DEPICTED ON THIS MAP REPRESENTS THE RESULTS OF SURVEYS MADE ON THE DATES INDICATED ABOVE AND CAN ONLY BE CONSIDERED AS INDICATING THE GENERAL CONDITIONS AT THAT TIME. THIS CHART IS SOLELY FOR THE DISTRIBUTION OF AVAILABLE DEPTHS AT THE TIME OF THE SURVEY.
- SURVEY ACCURACY PERFORMANCE STANDARDS, QUALITY CONTROL, AND QUALITY ASSURANCE REQUIREMENTS WERE FOLLOWED DURING THIS SURVEY IN ACCORDANCE WITH USACE EM 1110-2-1003, HYDROGRAPHIC SURVEYING, 30 NOV 2013 AND EM 1110-2-6056, STANDARDS AND PROCEDURES FOR REFERENCING PROJECT ELEVATION GRADES TO NATIONWIDE VERTICAL DATUMS, 30 NOV 2013.

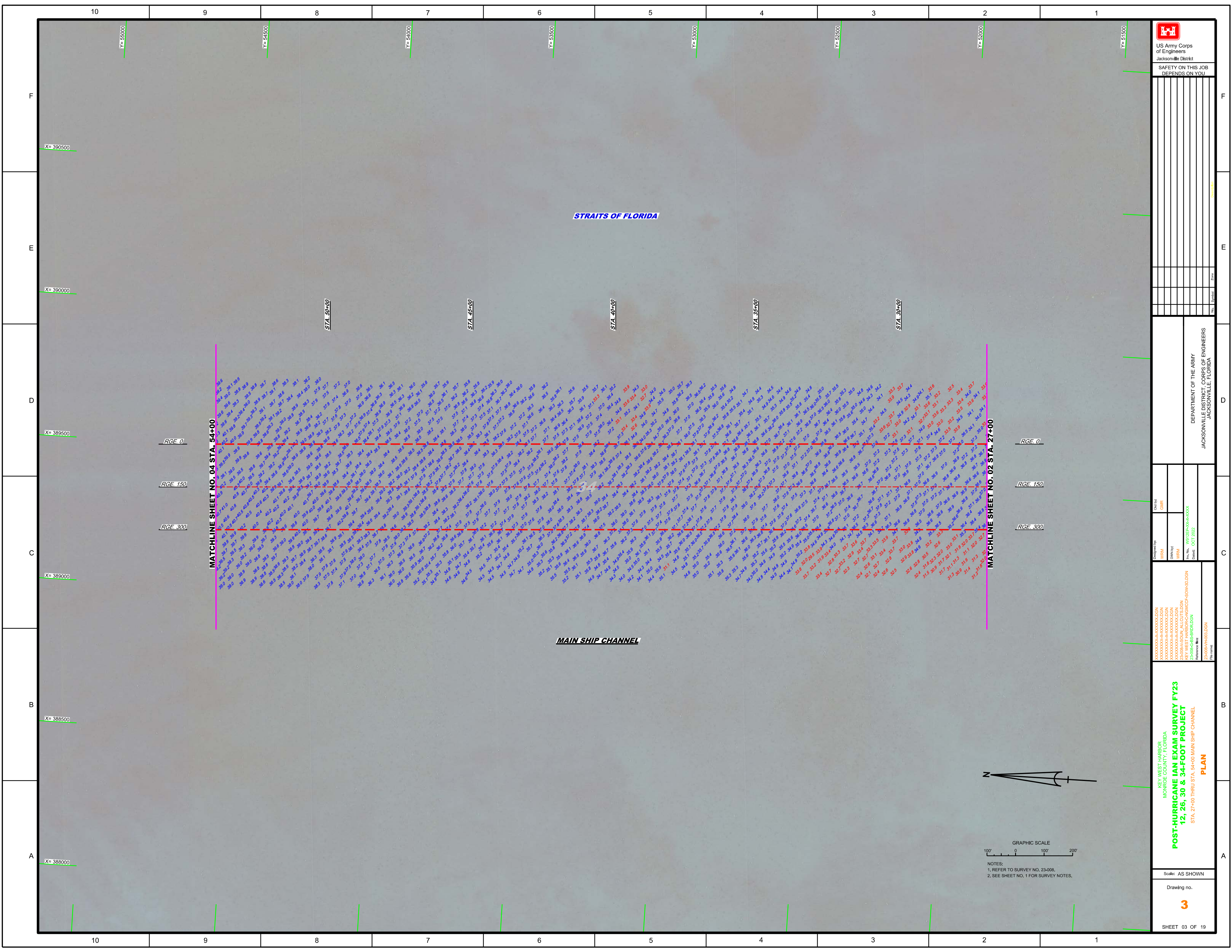
LEGEND	
	BENCHMARK
	LIGHTED BEACON
	GREEN DAY BEACON
	RED DAY BEACON
	RED LIGHTED BUOY
	GREEN LIGHTED BUOY
	CAN BUOY
	NUN BUOY
	TIDE STAFF
	PROJECT DEPTH


US Army Corps of Engineers
Jacksonville District
SAFETY ON THIS JOB
DEPENDS ON YOU

DEPARTMENT OF THE ARMY
JACKSONVILLE DISTRICT, CORPS OF ENGINEERS
JACKSONVILLE, FLORIDA

KEY WEST HARBOR
MONROE COUNTY, FLORIDA
POST-HURRICANE IAN EXAM SURVEY FY23
12, 26, 30 & 34-FOOT PROJECT
INDEX, LOCATION AND VICINITY
MAP

Scale: AS SHOWN
Drawing no. 1
SHEET 01 OF 26




 US Army Corps
 of Engineers
 Jacksonville District
 SAFETY ON THIS JOB
 DEPENDS ON YOU

DEPARTMENT OF THE ARMY
 JACKSONVILLE DISTRICT, CORPS OF ENGINEERS
 JACKSONVILLE, FLORIDA

Designed by: **WRM**
 Checked by: **GHR**
 Date: **OCT 2022**

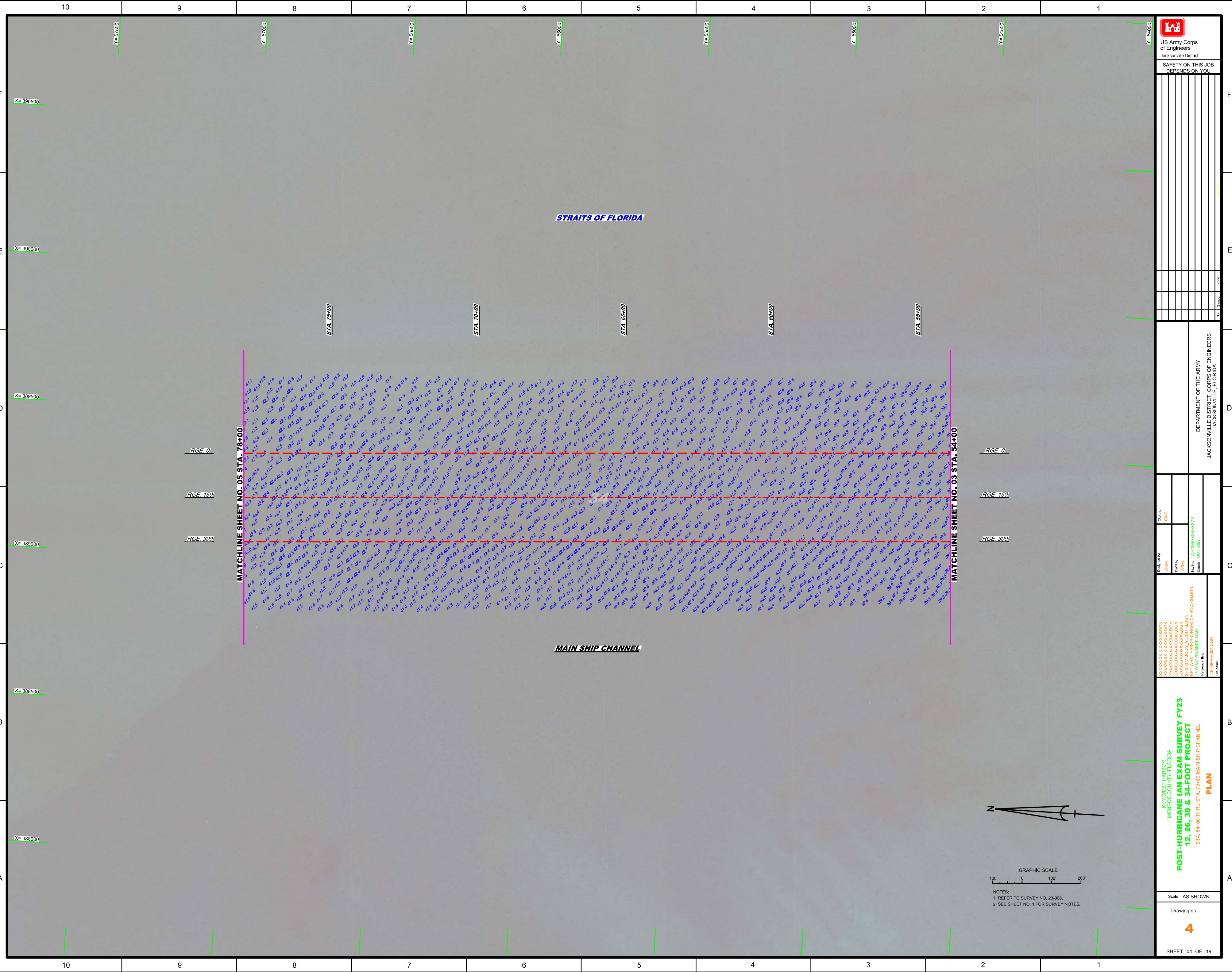
File name:
 2-0085-GS-BR10L.DGN
 Reference file:
 2-0085-HR10L.DGN

KEY WEST HARBOR,
 MONROE COUNTY, FLORIDA
POST-HURRICANE IAN EXAM SURVEY FY23
12, 26, 30 & 34-FOOT PROJECT
 STA. 27+00 THRU STA. 54+00 MAIN SHIP CHANNEL
PLAN

Scale: AS SHOWN
 Drawing no.
3
 SHEET 03 OF 19



GRAPHIC SCALE
 100' 0 100' 200'
 NOTES:
 1. REFER TO SURVEY NO. 23-008.
 2. SEE SHEET NO. 1 FOR SURVEY NOTES.



US Army Corps of Engineers
Jacksonville District
SAFETY ON THIS JOB DEPENDS ON YOU

NO.	SYMBOL	ZONE

DEPARTMENT OF THE ARMY
JACKSONVILLE DISTRICT, CORPS OF ENGINEERS
JACKSONVILLE, FLORIDA

POST-HURRICANE IAN EXAM SURVEY FY23
12, 26, 30 & 34-FOOT PROJECT
STRAITS OF FLORIDA MAIN SHIP CHANNEL
STA. 54+00 THRU STA. 78+00

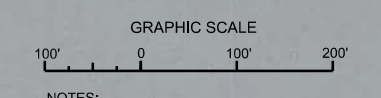
Reference files:
23-0885-SS-BRDALDGN
23-0885-VRKRDALDGN

Key West Harbor
MONROE COUNTY, FLORIDA
PLAN

Scale: AS SHOWN

Drawing no.
4

SHEET 04 OF 19



NOTES:
1. REFER TO SURVEY NO. 23-008.
2. SEE SHEET NO. 1 FOR SURVEY NOTES.

MATCHLINE SHEET NO. 05 STA. 78+00

MATCHLINE SHEET NO. 03 STA. 54+00

RGE 0
RGE 150
RGE 300

STA. 75+00 STA. 70+00 STA. 65+00 STA. 60+00 STA. 55+00

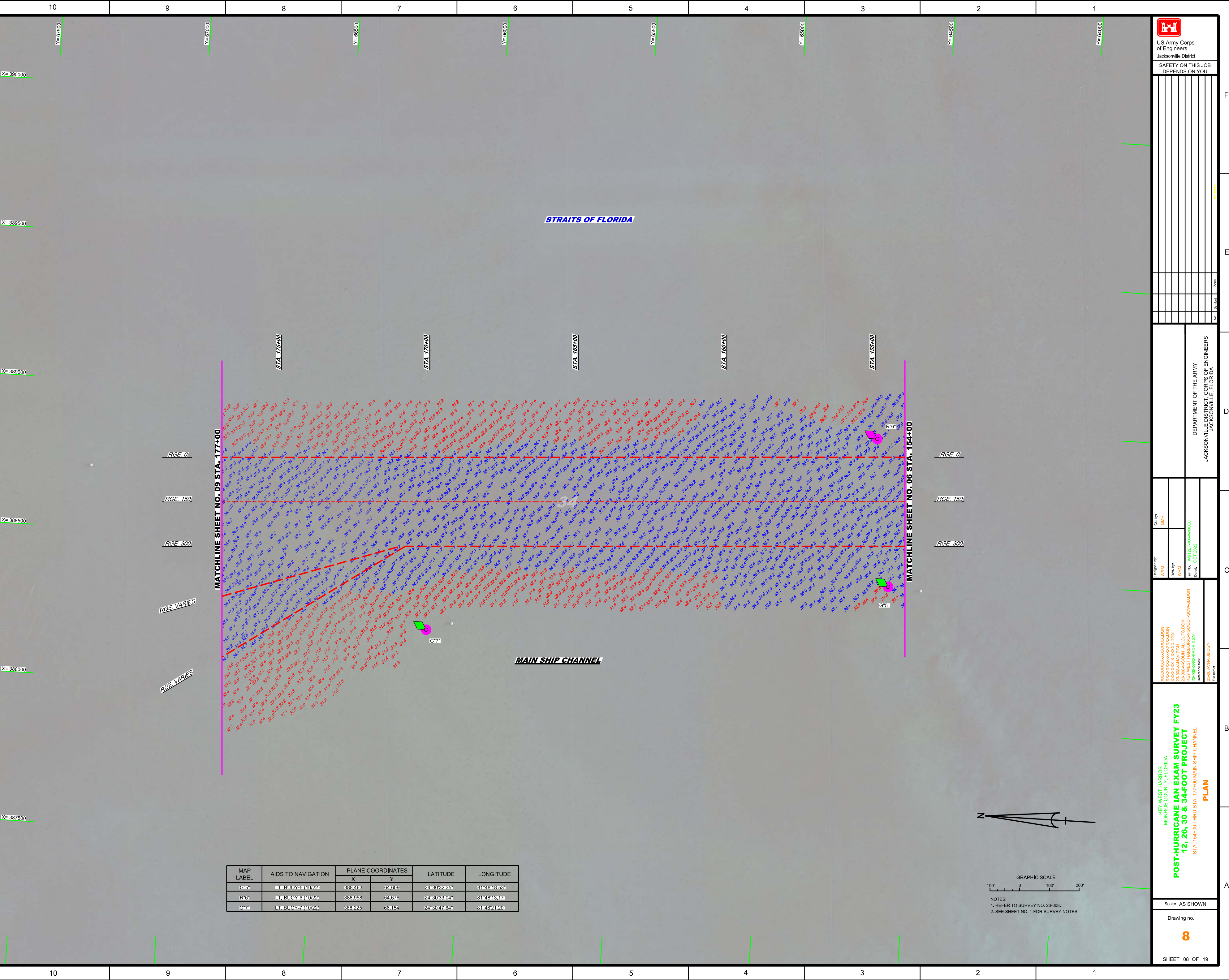
US Army Corps of Engineers
Jacksonville District
SAFETY ON THIS JOB
DEPENDS ON YOU

DEPARTMENT OF THE ARMY
JACKSONVILLE DISTRICT, CORPS OF ENGINEERS
JACKSONVILLE, FLORIDA

Designed by: WRM
Checked by: GHR
Drawn by: WRM
File No: W12556-00-000
Date: OCT 2022

KEY WEST HARBOR
MONROE COUNTY, FLORIDA
POST-HURRICANE IAN EXAM SURVEY FY23
12, 26, 30 & 34-FOOT PROJECT
STA. 154+00 THRU STA. 177+00 MAIN SHIP CHANNEL
PLAN

Scale: AS SHOWN
Drawing no. **8**
SHEET 08 OF 19



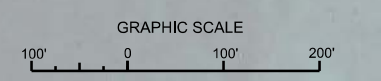
STRAITS OF FLORIDA

MAIN SHIP CHANNEL

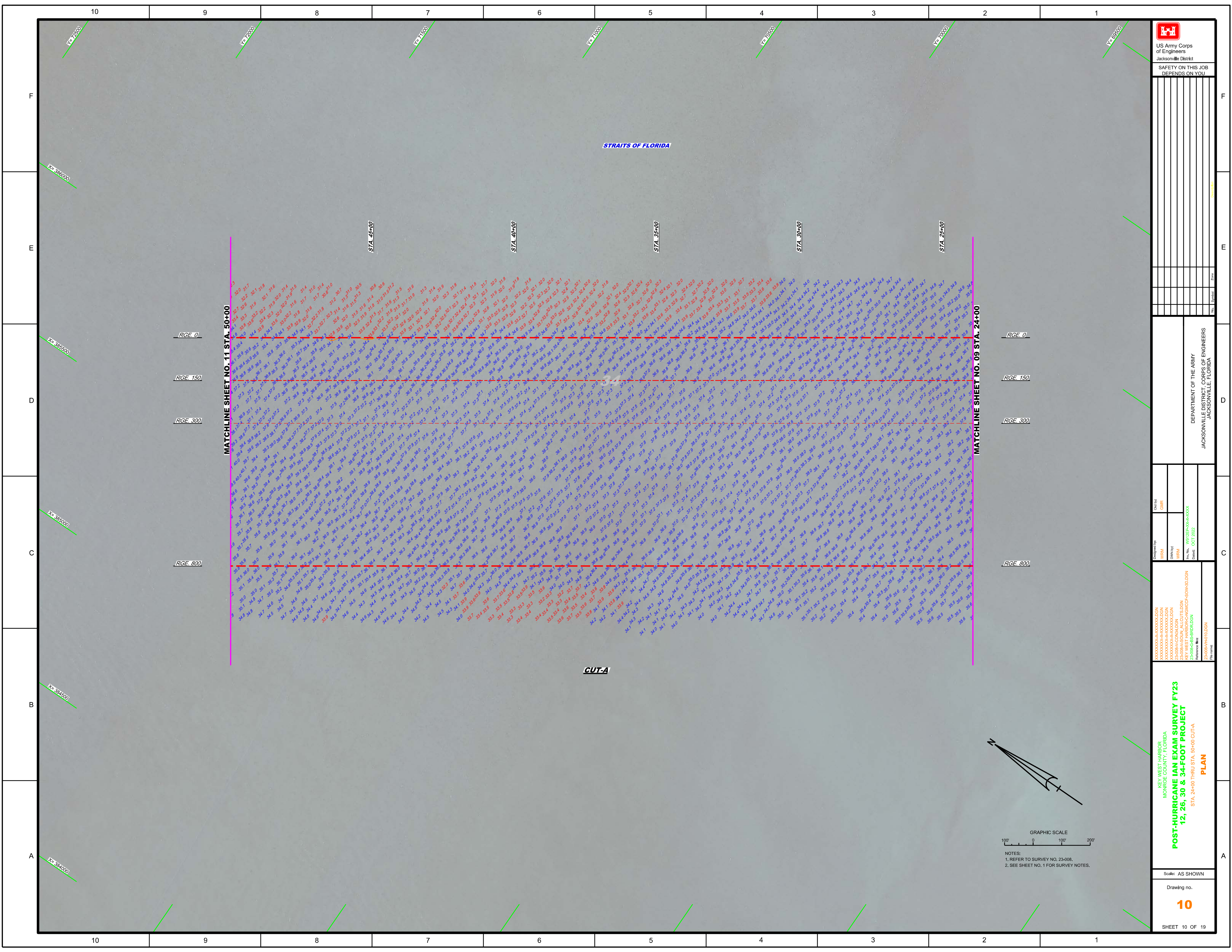
MATCHLINE SHEET NO. 09 STA. 177+00


MATCHLINE SHEET NO. 06 STA. 154+00

MAP LABEL	AIDS TO NAVIGATION	PLANE COORDINATES		LATITUDE	LONGITUDE
		X	Y		
G-5	LT. BUOY-5 (10/22)	388463	64609	24°30'32.35"	81°48'18.53"
R-6	LT. BUOY-6 (10/22)	388958	64676	24°30'33.04"	81°48'18.17"
G-7	LT. BUOY-7 (10/22)	388225	66454	24°30'47.64"	81°48'21.20"



NOTES:
1. REFER TO SURVEY NO. 23-008.
2. SEE SHEET NO. 1 FOR SURVEY NOTES.





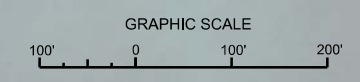
 US Army Corps of Engineers
 Jacksonville District
 SAFETY ON THIS JOB
 DEPENDS ON YOU

DEPARTMENT OF THE ARMY
 JACKSONVILLE DISTRICT, CORPS OF ENGINEERS
 JACKSONVILLE, FLORIDA

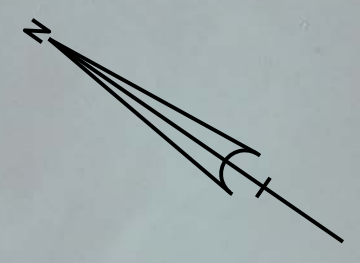
Designed by: **WRM**
 Drawn by: **WRM**
 Checked by: **WRM**
 Date: **OCT 2022**

POST-HURRICANE IAN EXAM SURVEY FY23
12, 26, 30 & 34-FOOT PROJECT
 STA. 24+00 THRU STA. 50+00 CUT-A
PLAN

Scale: AS SHOWN
 Drawing no. **10**
 SHEET 10 OF 19



NOTES:
 1. REFER TO SURVEY NO. 23-008.
 2. SEE SHEET NO. 1 FOR SURVEY NOTES.



CUT-A

STRAITS OF FLORIDA

MATCHLINE SHEET NO. 11 STA. 50+00

MATCHLINE SHEET NO. 09 STA. 24+00

RGE. 0
 RGE. 150
 RGE. 300
 RGE. 800

RGE. 0
 RGE. 150
 RGE. 300
 RGE. 800

STA. 45+00

STA. 40+00

STA. 35+00

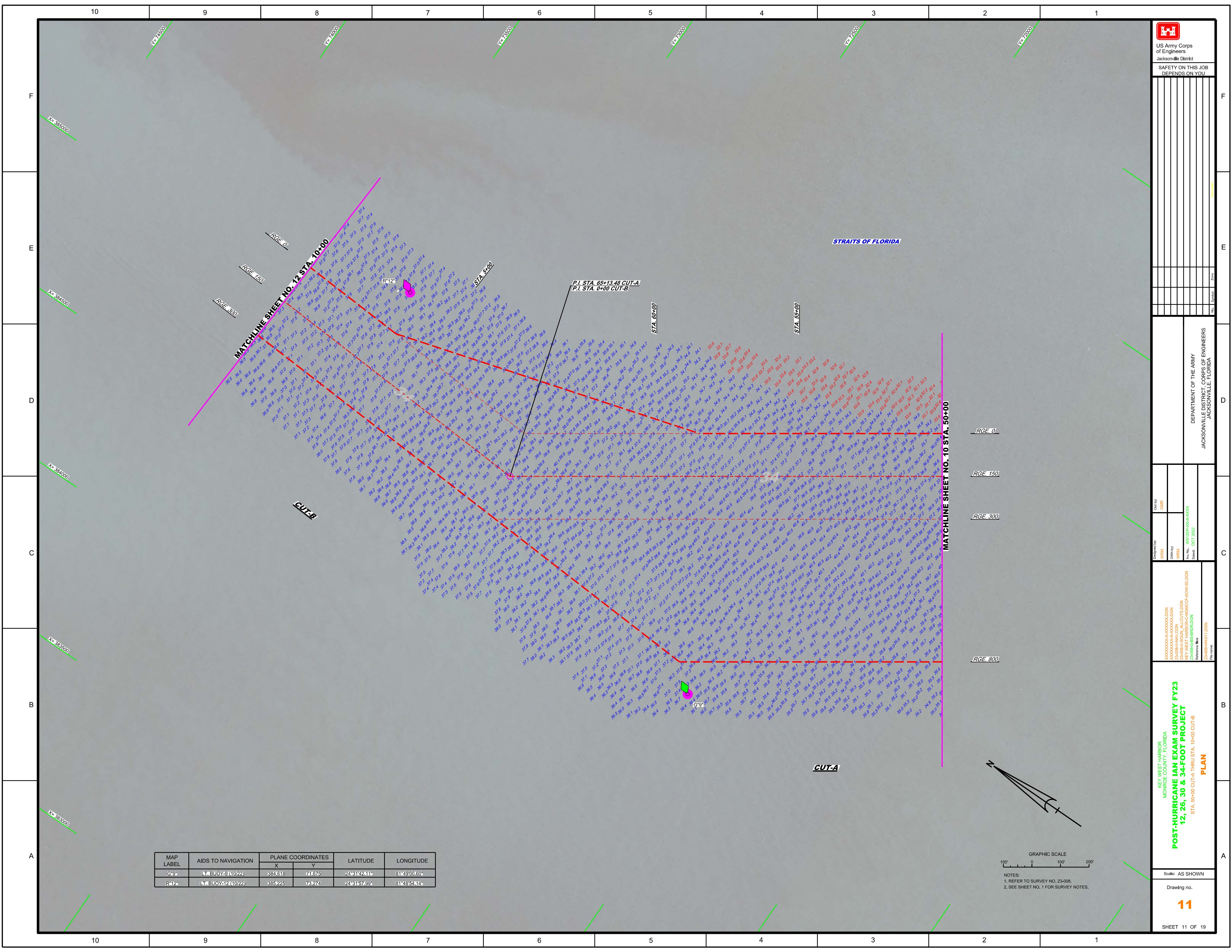
STA. 30+00

STA. 25+00

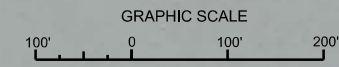
10 9 8 7 6 5 4 3 2 1

F E D C B A


VE 7250
 VE 7650
 VE 7850
 VE 7950
 VE 8050
 XE 30500
 XE 30550
 XE 30600
 XE 30650
 XE 30700



MAP LABEL	AIDS TO NAVIGATION	PLANE COORDINATES		LATITUDE	LONGITUDE
		X	Y		
G9*	BUOY 51 (10/22)	884316	748074	24°41'24.41"	81°49'00.60"
R12*	BUOY 512 (10/22)	885226	748274	24°41'57.99"	81°48'54.14"



NOTES:
 1. REFER TO SURVEY NO. 23-008.
 2. SEE SHEET NO. 1 FOR SURVEY NOTES.



US Army Corps of Engineers
 Jacksonville District
 SAFETY ON THIS JOB
 DEPENDS ON YOU

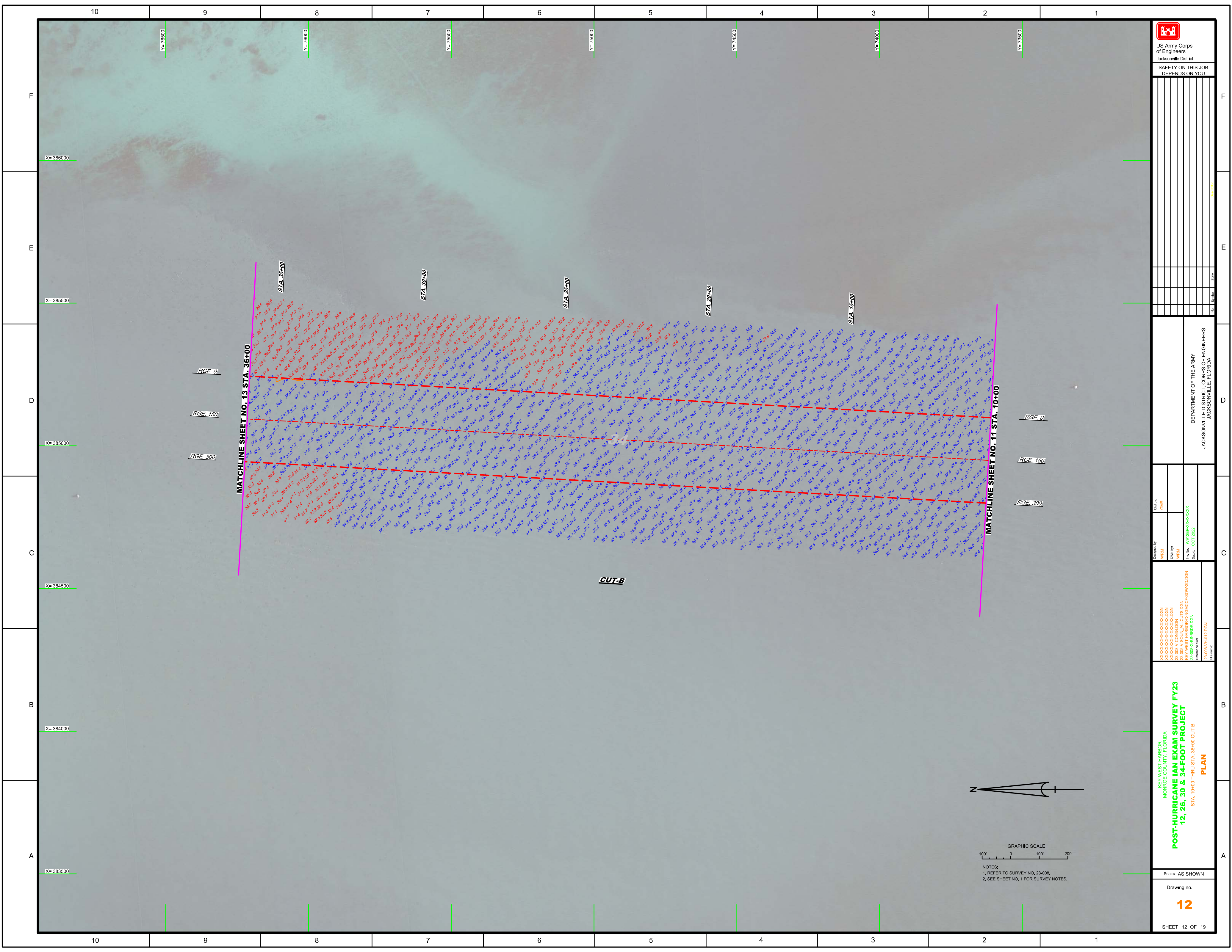
DEPARTMENT OF THE ARMY
 JACKSONVILLE DISTRICT, CORPS OF ENGINEERS
 JACKSONVILLE, FLORIDA


Drawn by: GHR
 Checked by: GHR
 Date: OCT 2022

KEY WEST HARBOR, FLORIDA
 MONROE COUNTY, FLORIDA
POST-HURRICANE IAN EXAM SURVEY FY23
 STA. 50+00 CUT-A THRU STA. 10+00 CUT-B
PLAN

Scale: AS SHOWN
 Drawing no.
11

SHEET 11 OF 19





 US Army Corps of Engineers
 Jacksonville District
 SAFETY ON THIS JOB
 DEPENDS ON YOU

DEPARTMENT OF THE ARMY
 JACKSONVILLE DISTRICT, CORPS OF ENGINEERS
 JACKSONVILLE, FLORIDA

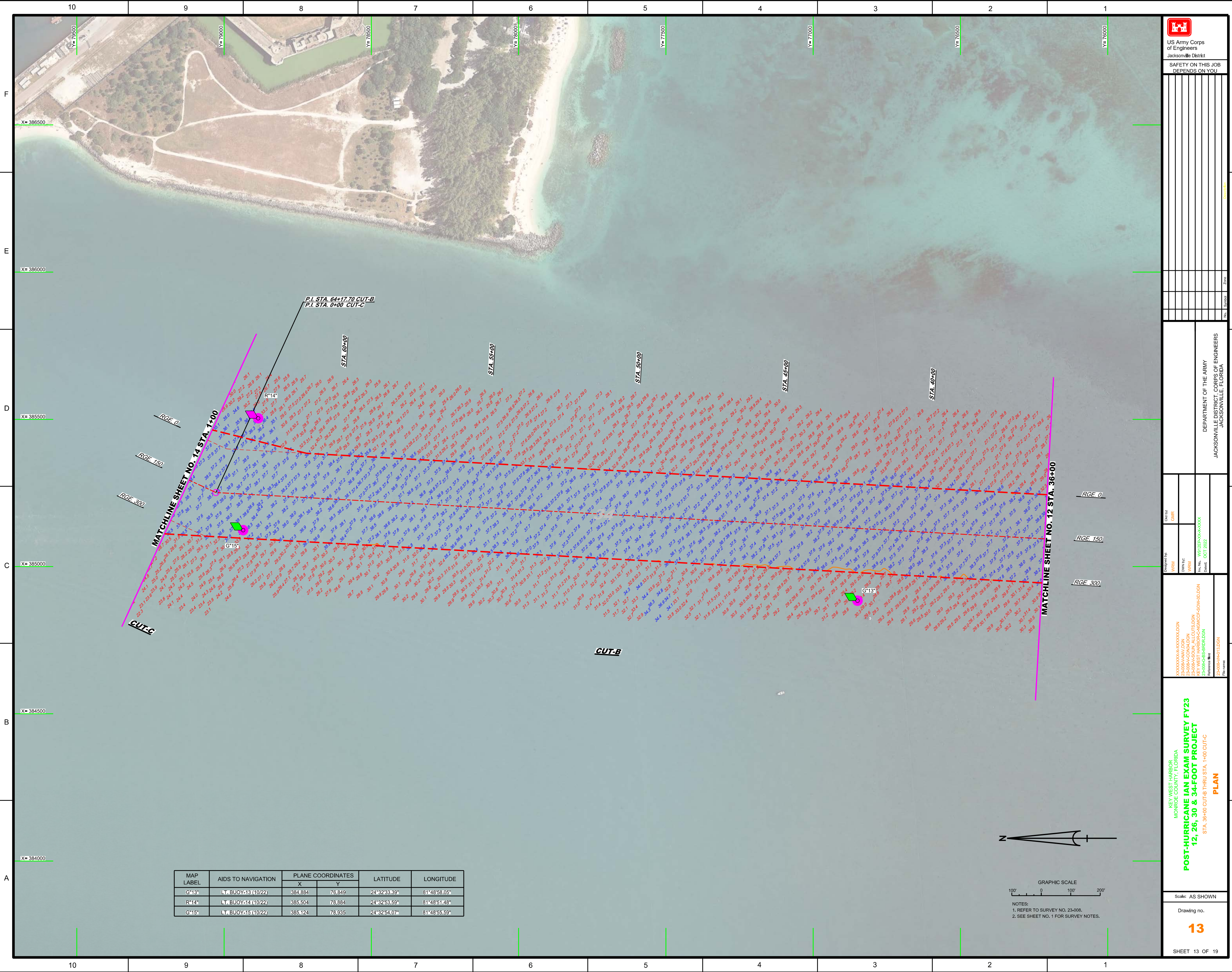
Designed by: WRM
 Drawn by: WRM
 Checked by: WRM
 Date: OCT 2022

KEY WEST HARBOR,
 MONROE COUNTY, FLORIDA
POST-HURRICANE IAN EXAM SURVEY FY23
12, 26, 30 & 34-FOOT PROJECT
 STA. 10+00 THRU STA. 36+00 CUT-B
PLAN

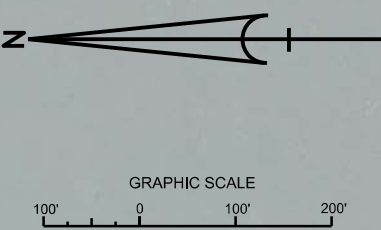
Scale: AS SHOWN
 Drawing no.
12
 SHEET 12 OF 19




GRAPHIC SCALE
 100' 0 100' 200'
 NOTES:
 1. REFER TO SURVEY NO. 23-008.
 2. SEE SHEET NO. 1 FOR SURVEY NOTES.



MAP LABEL	AIDS TO NAVIGATION	PLANE COORDINATES		LATITUDE	LONGITUDE
		X	Y		
G-13*	LT. BUOY-13 (10/22)	384,884	78,849	24°32'33.39"	81°48'58.05"
R-14*	LT. BUOY-14 (10/22)	385,504	78,884	24°32'53.59"	81°48'51.48"
G-15*	LT. BUOY-15 (10/22)	385,124	78,935	24°32'54.07"	81°48'55.59"



NOTES:
 1. REFER TO SURVEY NO. 23-008.
 2. SEE SHEET NO. 1 FOR SURVEY NOTES.



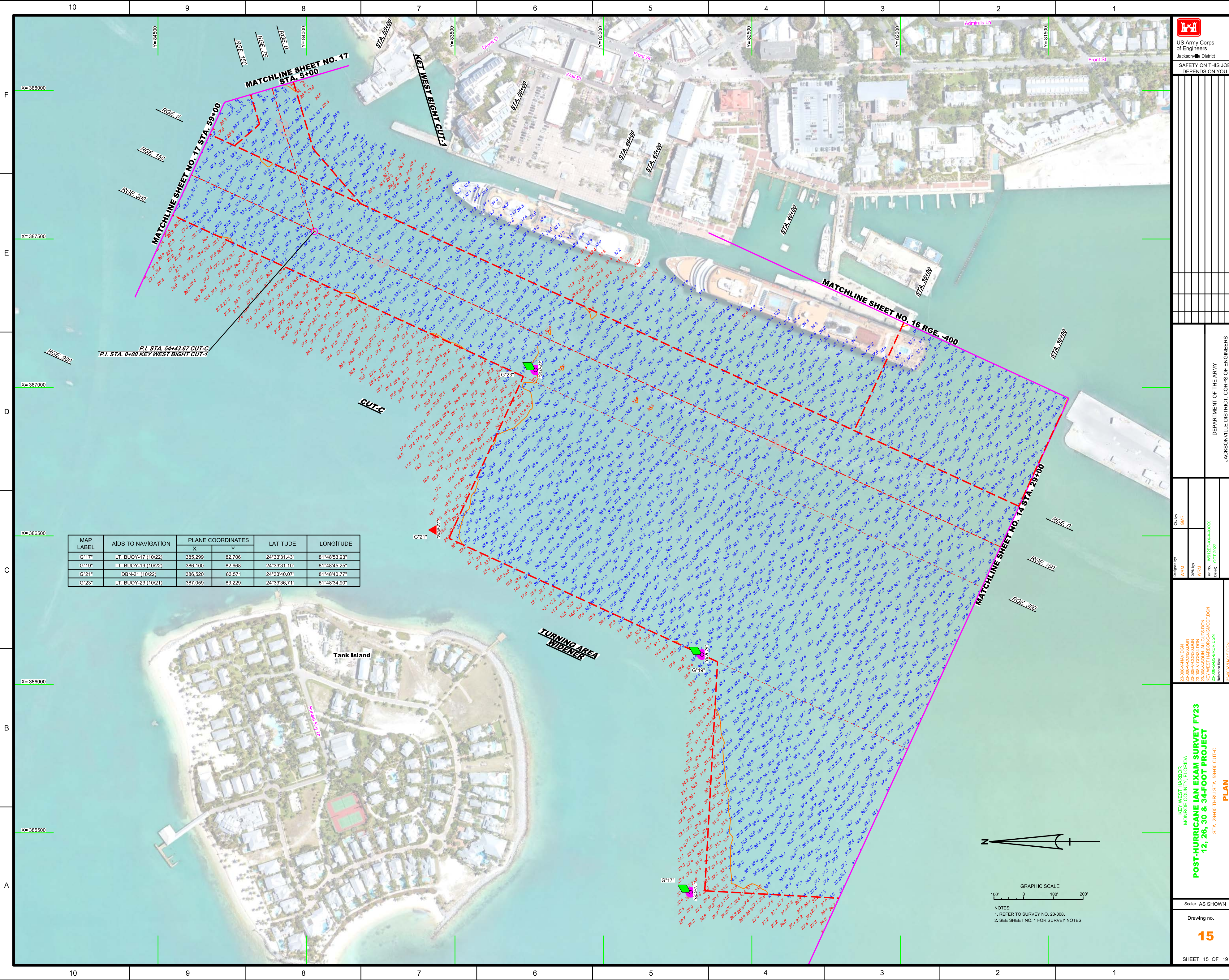
US Army Corps of Engineers
 Jacksonville District
 SAFETY ON THIS JOB
 DEPENDS ON YOU

DEPARTMENT OF THE ARMY
 JACKSONVILLE DISTRICT, CORPS OF ENGINEERS
 JACKSONVILLE, FLORIDA


Drawn by: GHR
 Checked by: GHR
 Date: OCT 2022

KEY WEST HARBOR
 MONROE COUNTY, FLORIDA
POST-HURRICANE IAN EXAM SURVEY FY23
12, 26, 30 & 34-FOOT PROJECT
 STA. 36+00 CUT-B THRU STA. 1+00 CUT-C
PLAN

Scale: AS SHOWN
 Drawing no.
13
 SHEET 13 OF 19



MAP LABEL	AIDS TO NAVIGATION	PLANE COORDINATES		LATITUDE	LONGITUDE
		X	Y		
G*17*	LT. BUOY-17 (10/22)	385,299	82,706	24°33'31.43"	81°48'53.93"
G*19*	LT. BUOY-19 (10/22)	386,100	82,668	24°33'31.10"	81°48'45.25"
G*21*	DBN-21 (10/22)	386,520	83,571	24°33'40.07"	81°48'40.77"
G*23*	LT. BUOY-23 (10/21)	387,059	83,229	24°33'36.71"	81°48'34.90"



US Army Corps of Engineers
Jacksonville District
SAFETY ON THIS JOB
DEPENDS ON YOU

DEPARTMENT OF THE ARMY
JACKSONVILLE DISTRICT, CORPS OF ENGINEERS
JACKSONVILLE, FLORIDA

Checked By: GHR
Designed By: WRM
Drawn By: WRM
File No: W12355A-000000
Date: OCT 2022

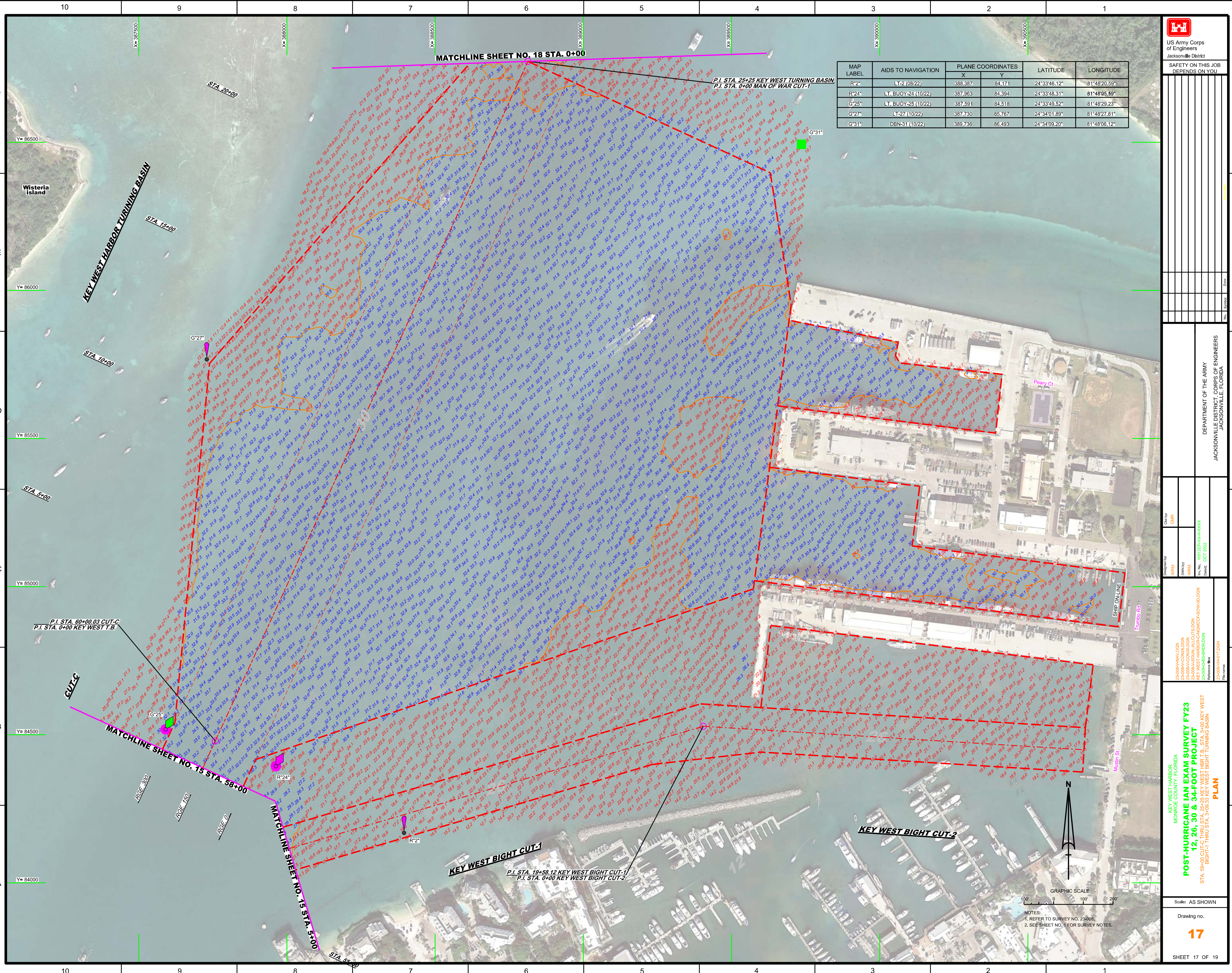
23-008A-HAV.DGN
23-008A-CON.DGN
23-008A-COM.DGN
KEY WEST HARBOR CANAL CUT-C
23-008A-CB-BIRDALON
Reference File: 23-008A-HAV.DGN

KEY WEST HARBOR
MONROE COUNTY, FLORIDA
POST-HURRICANE IAN EXAM SURVEY FY23
12, 26, 30 & 34-FOOT PROJECT
STA. 29+00 THRU STA. 59+00 CUT-C
PLAN

Scale: AS SHOWN
Drawing no.
15
SHEET 15 OF 19



 US Army Corps of Engineers Jacksonville District SAFETY ON THIS JOB DEPENDS ON YOU	
Drawn by: WRM Checked by: GHR	Date: OCT 2022
DEPARTMENT OF THE ARMY JACKSONVILLE DISTRICT, CORPS OF ENGINEERS JACKSONVILLE, FLORIDA	
Project Name: POST-HURRICANE IAN EXAM SURVEY FY23 12, 26, 30 & 34-FOOT PROJECT TRUMAN HARBOR PLAN	
Scale: AS SHOWN Drawing no. 16 SHEET 16 OF 19	



MAP LABEL	AIDS TO NAVIGATION	PLANE COORDINATES		LATITUDE	LONGITUDE
		X	Y		
R-2"	LT-2 (08/22)	388,387	84,171	24°33'46.12"	81°48'20.59"
R-24"	LT. BUOY-24 (10/22)	387,963	84,394	24°33'48.31"	81°48'05.59"
G-25"	LT. BUOY-25 (10/22)	387,591	84,518	24°33'49.52"	81°48'29.23"
G-27"	LT-27 (10/22)	387,730	85,767	24°34'01.89"	81°48'27.81"
G-31"	DBN-31 (10/22)	389,736	86,493	24°34'09.20"	81°48'06.12"

US Army Corps of Engineers
Jacksonville District

SAFETY ON THIS JOB DEPENDS ON YOU

DEPARTMENT OF THE ARMY
JACKSONVILLE DISTRICT, CORPS OF ENGINEERS
JACKSONVILLE, FLORIDA

Project: **POST-HURRICANE IAN EXAM SURVEY FY23**
12, 26, 30 & 34-FOOT PROJECT
STA. 59+00 CUT-C THRU STA. 25+25 KEY WEST HARBOR T.B., STA. 0+00 KEY WEST BIGHT THRU STA. 59+83.83 KEY WEST BIGHT TURNING BASIN

Scale: AS SHOWN

Drawing no. **17**

SHEET 17 OF 19

Project Manager: [Name]

Checked By: GHR

Designed By: WRM

Drawn By: WRM

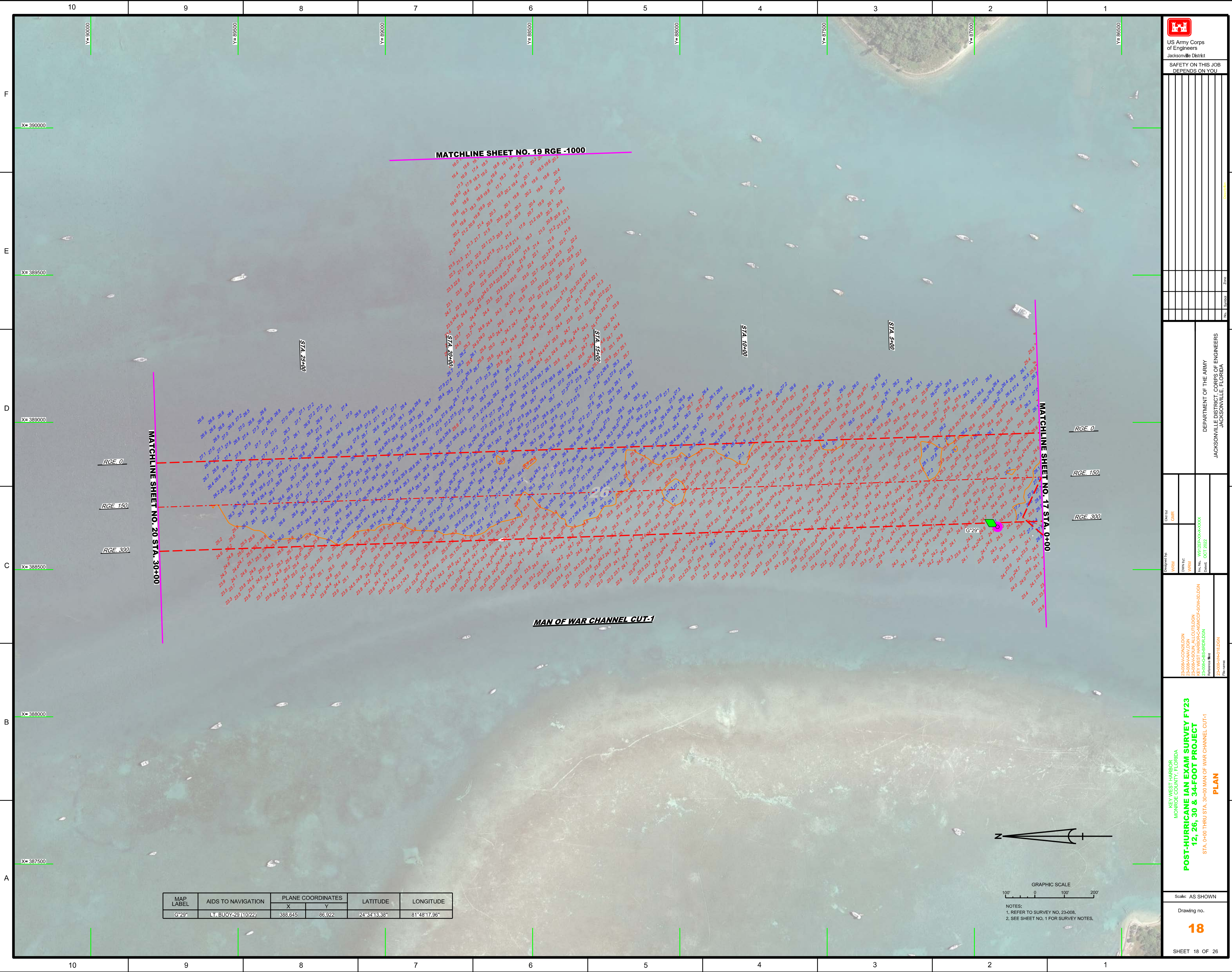
Reference File: 23088-68-BRI-RD-DGN

Revision: [Number]

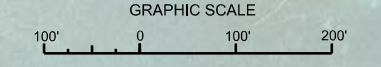
Date: OCT 2023

GRAPHIC SCALE
0 100 200


NOTES:
1. REFER TO SURVEY NO. 23-008.
2. SEE SHEET NO. 1 FOR SURVEY NOTES.



MAP LABEL	AIDS TO NAVIGATION	PLANE COORDINATES		LATITUDE	LONGITUDE
		X	Y		
G-29	LT. BUOY-29 (10/22)	388,645	86,922	24° 34' 13.38"	81° 48' 17.96"



NOTES:
 1. REFER TO SURVEY NO. 23-008.
 2. SEE SHEET NO. 1 FOR SURVEY NOTES.



US Army Corps of Engineers
 Jacksonville District
 SAFETY ON THIS JOB
 DEPENDS ON YOU

DESIGNED BY: WRM CHECKED BY: GHR DATE: OCT 2022	DEPARTMENT OF THE ARMY JACKSONVILLE DISTRICT, CORPS OF ENGINEERS JACKSONVILLE, FLORIDA
---	--

KEY WEST HARBOR
 MONROE COUNTY, FLORIDA

POST-HURRICANE IAN EXAM SURVEY FY23
12, 26, 30 & 34-FOOT PROJECT

STA. 0+00 THRU STA. 30+00 MAN OF WAR CHANNEL CUT-1

PLAN

Scale: AS SHOWN

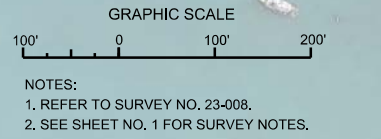
Drawing no.


18

SHEET 18 OF 26



MAP LABEL	AIDS TO NAVIGATION	PLANE COORDINATES		LATITUDE	LONGITUDE
		X	Y		
G*3	CAN BUOY-3 (10/22)	390,332	88,722	24°34'31.31"	81°47'59.81"
R*4	DBN-4 (10/22)	390,475	88,585	24°34'29.97"	81°47'58.24"




 US Army Corps of Engineers
 Jacksonville District
SAFETY ON THIS JOB DEPENDS ON YOU

DEPARTMENT OF THE ARMY
JACKSONVILLE DISTRICT, CORPS OF ENGINEERS
JACKSONVILLE, FLORIDA

**POST-HURRICANE IAN EXAM SURVEY FY23
12, 26, 30 & 34-FOOT PROJECT**

APPROACH TO AMMUNITION DOCK

PLAN

Scale: AS SHOWN
Drawing no.
19

SHEET 19 OF 26